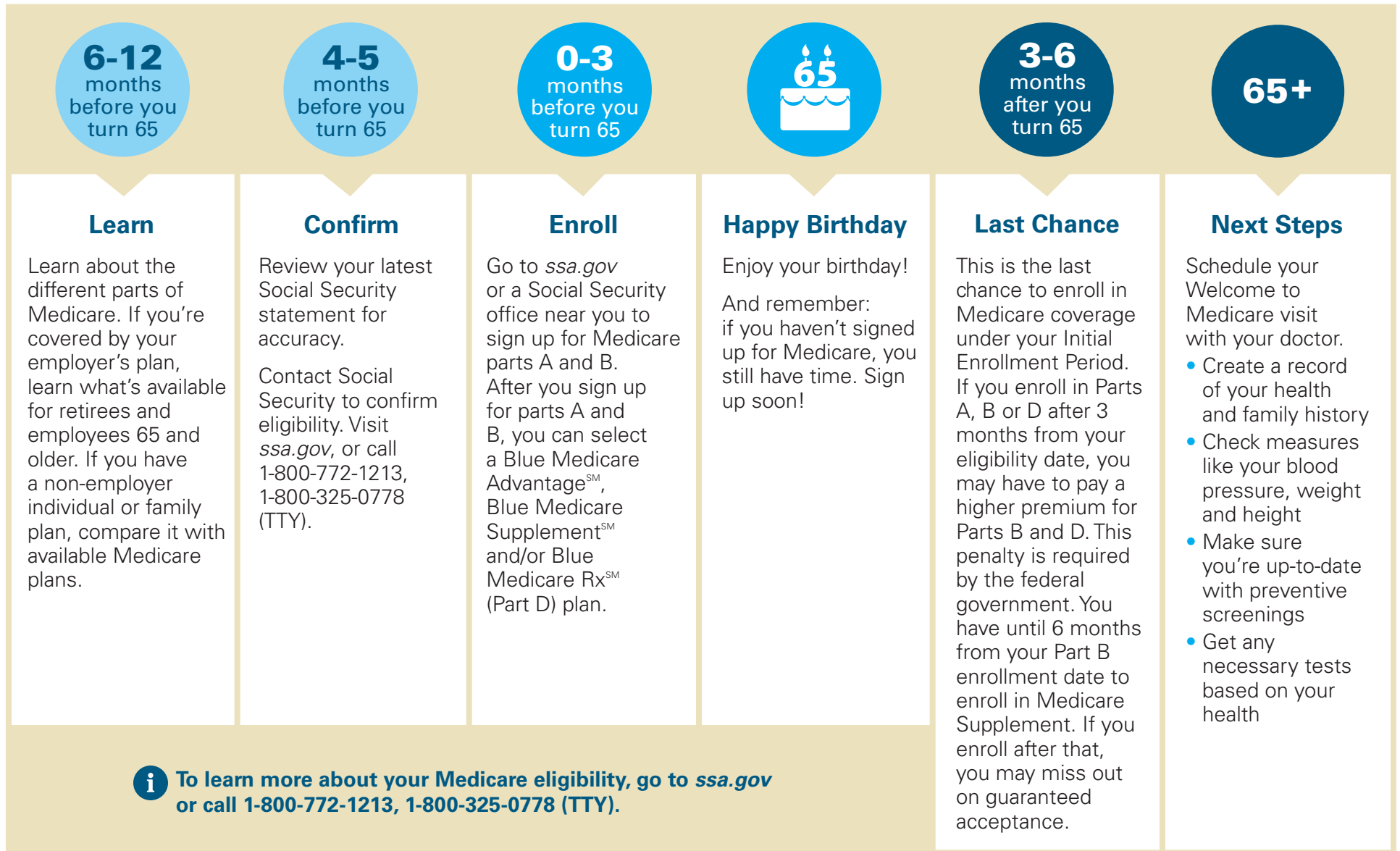


Medicare Timeline

Your move to **BlueMEDICARE**SM



i To learn more about your Medicare eligibility, go to ssa.gov or call 1-800-772-1213, 1-800-325-0778 (TTY).

Medicare Enrollment

Your move to **BlueMEDICARE**SM

Medicare Advantage

For those new to Medicare, the **Initial Enrollment Period (IEP)** is the time when you can first sign up for Medicare Advantage. This period:

- Begins 3 months before the month you are eligible
- Includes the month you are eligible
- Ends 3 months after the month you are eligible

You can sign up for a Medicare Advantage plan anytime during the Initial Enrollment Period.

To enroll in a **Blue Medicare Advantage** plan*, you must:

- Be entitled to Medicare Part A
- Be enrolled in Medicare Part B
- Live in the plan's service area

If you want to change your Medicare Advantage plan, you can do so during the **Annual Enrollment Period (AEP)** which runs from **October 15 – December 7** each year. You may also change your plan if you have a qualifying life event. This is known as a **Special Enrollment Period (SEP)**.

Medicare Supplement

You can enroll in a **Blue Medicare Supplement** plan up to six months before your 65th birthday and in the six months after you purchase your Part B coverage. (You must be enrolled in Parts A and B before your Medicare Supplement coverage takes effect.) After that time, you may have to answer questions about your health to qualify for Medicare Supplement coverage.

Have Questions?

Contact a **Blue Cross NC Medicare Specialist**

Phone: **1-866-760-0822** (TTY: 711)

Hours: 7 days a week, 8 a.m. – 8 p.m.

Visit a **Blue Cross NC Center**

For a location near you, go to:

BlueCrossNC.com/Centers

Or contact a **Blue Cross NC**

Authorized Agent near you

Change Plans When You Need To

Our exclusive **Blue-to-Blue**SM program allows you to change your plan as your needs and budget change, without having to answer medical questions.¹

To learn more about Blue Medicare, visit:
BlueCrossNC.com/Time-For-Medicare

Footnote: 1 Members of Medicare supplement plans sponsored by Blue Cross NC will be able to change to other plans available when they purchased their original plan. Medicare Supplement plan changes for a January 1 effective date can occur between October 15 and December 31. Medicare Supplement plan changes for a June 1 effective date can occur between May 1 and May 31. Certain limits apply.

Note: * Due to federal regulations, you may not be eligible to enroll in a Medicare Advantage plan if you have end-stage renal disease (ESRD) unless you meet exception qualifications.

Blue Cross and Blue Shield of North Carolina is an HMO, PPO and PDP plan with a Medicare contract. Enrollment in Blue Cross and Blue Shield of North Carolina depends on contract renewal.

BLUE CROSS®, BLUE SHIELD®, the Cross and Shield symbols and all related derivative marks are registered service marks of the Blue Cross and Blue Shield Association, an association of independent Blue Cross and Blue Shield Plans. Blue Cross NC is an independent licensee of the Blue Cross and Blue Shield Association. U20270, 12/19